

# Coconino County Assessment of Post-Wildfire Debris-Flow and Flood Hazards

---

JOE LOVERICH, PE, CFM

JE FULLER/HYDROLOGY & GEOMORPHOLOGY, INC.



# Acknowledgements

Coconino County

JE Fuller

Arizona Geological Survey

City of Williams

Kaibab National Forest



**FEMA**

Cooperating Technical Partner

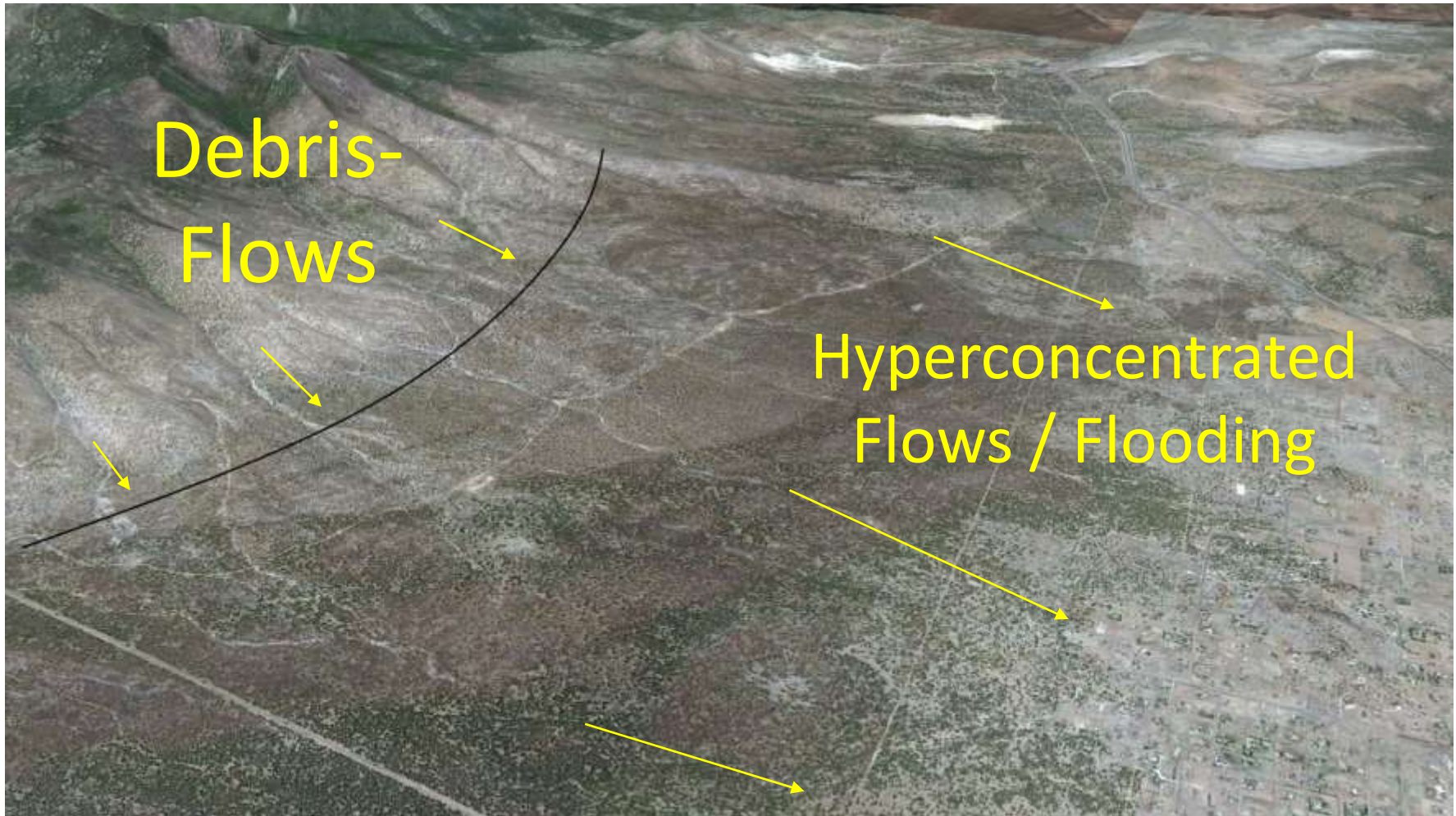


# Post Fire Risk

1. What?
2. Where?
3. How Bad?
4. **WHAT NOW?**



# What?

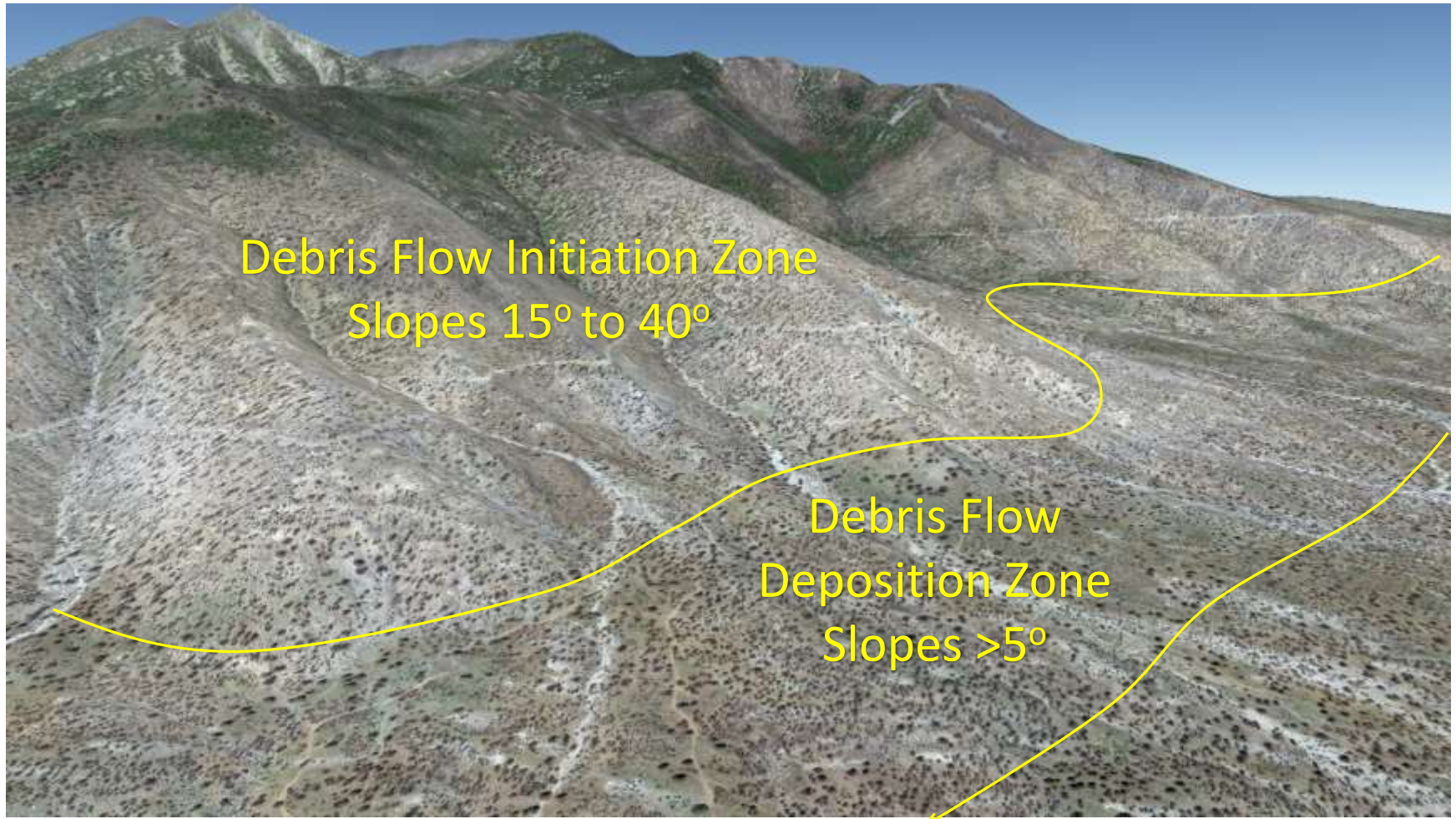


# Schultz Fire



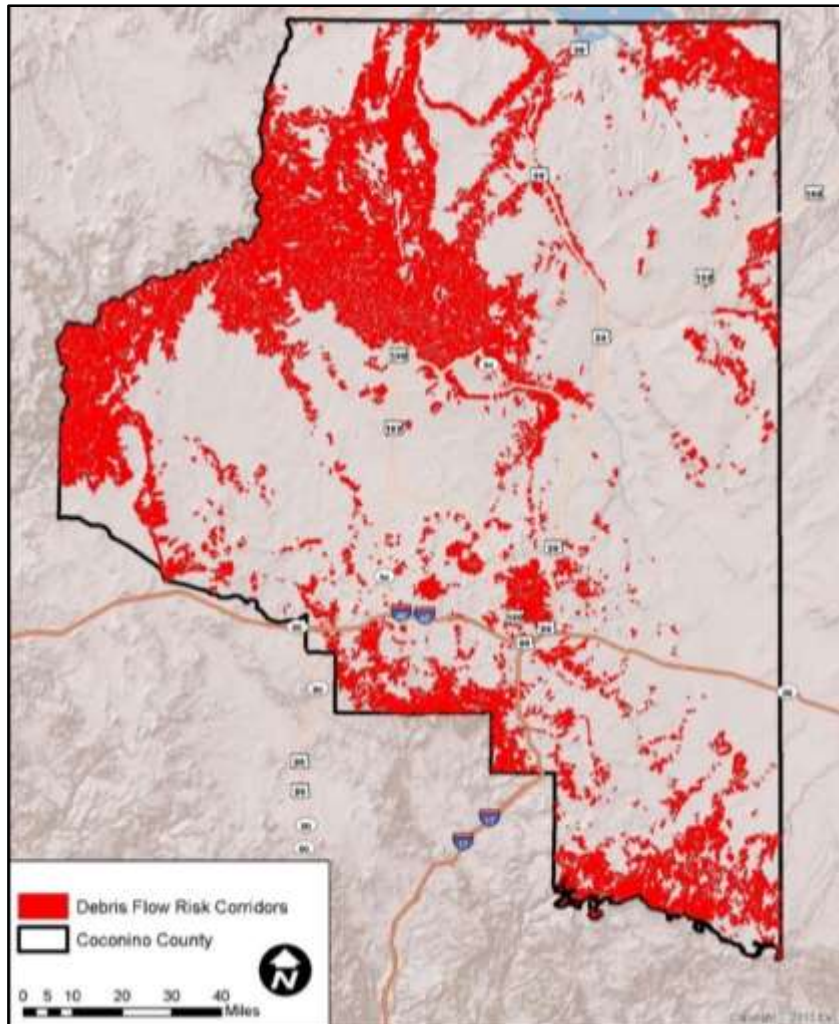


# Where?





# Debris-Flow Risk Corridors

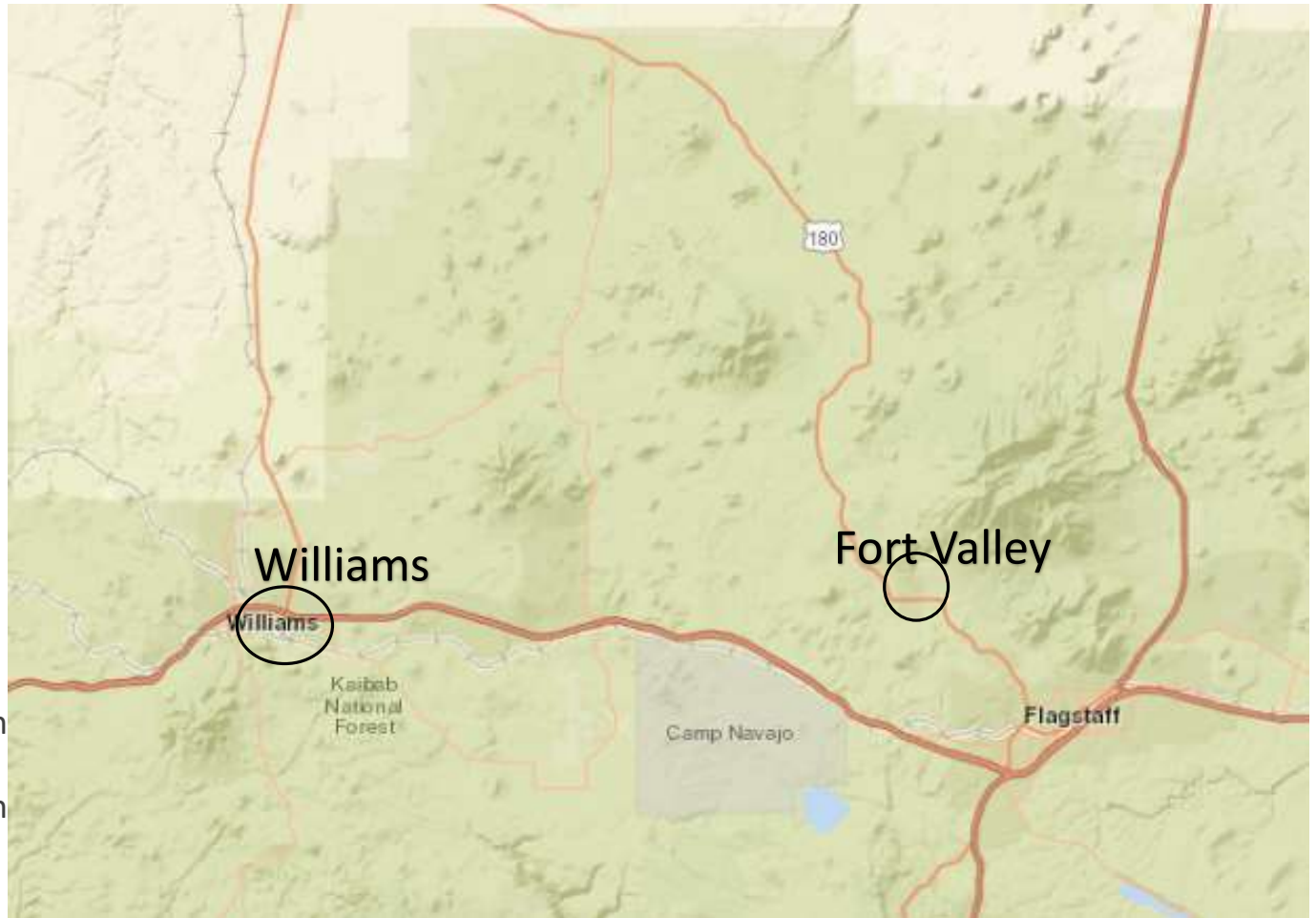


# Pilot Area Debris Flow & Flood Risk

# Pilot Areas

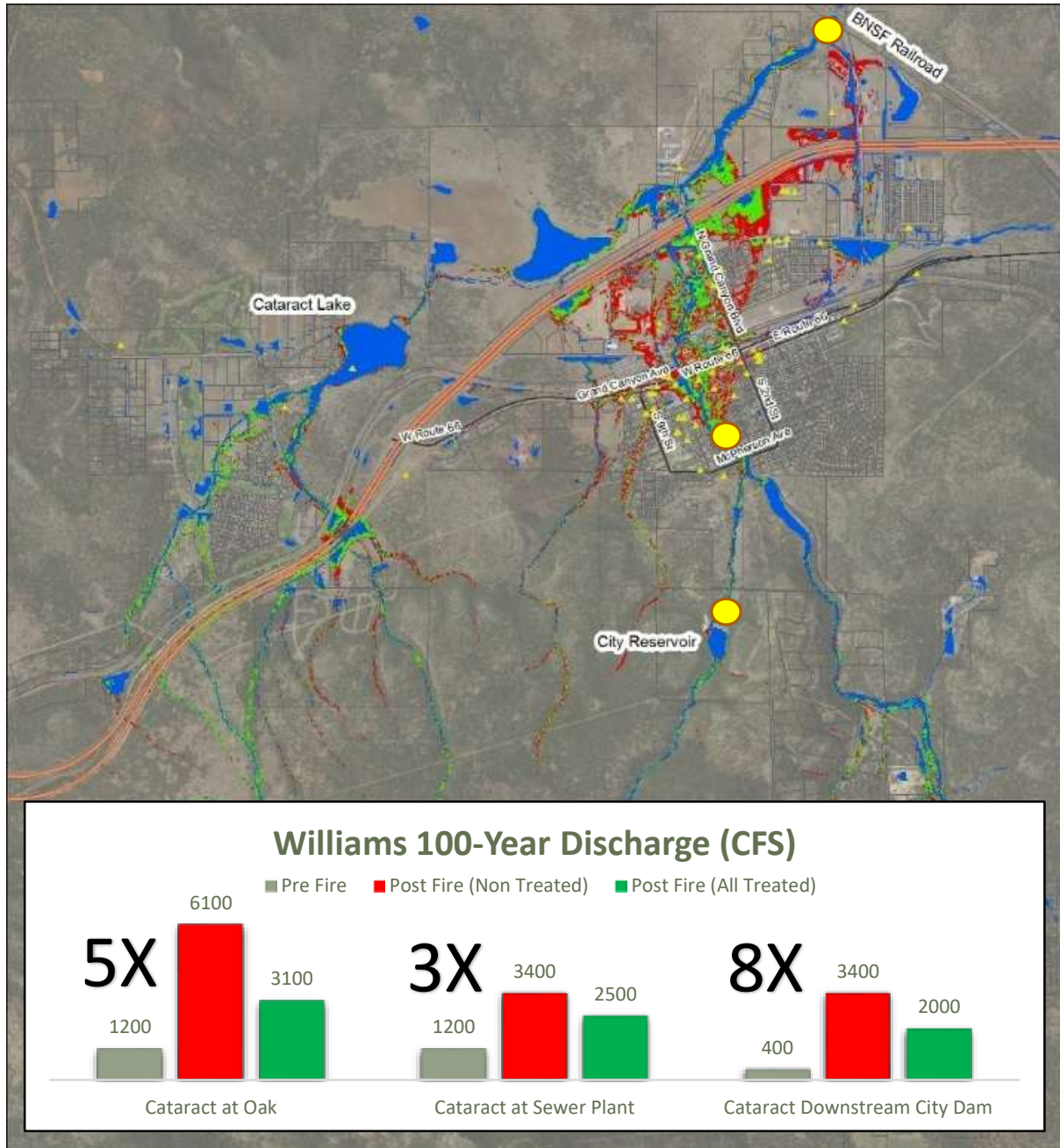
- Fort Valley
- Williams

1. Field investigation
2. Debris flow modeling
3. 2-Dimensional flow modeling
  - Existing Conditions
  - Post-Fire with Forest in its Current Condition
  - Post-Fire with Forest in Healthy (Treated) Condition

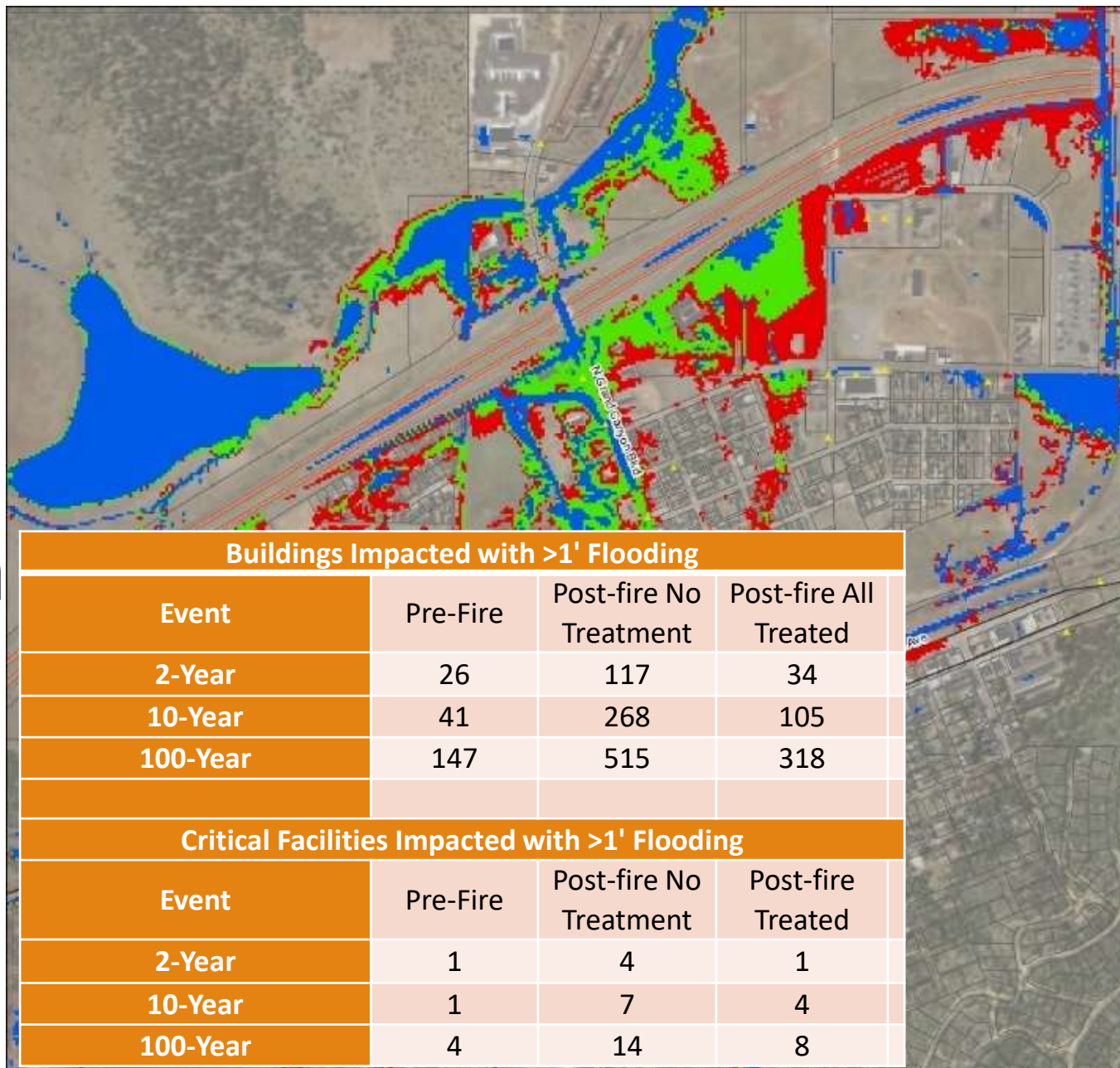




# Williams Flood Results

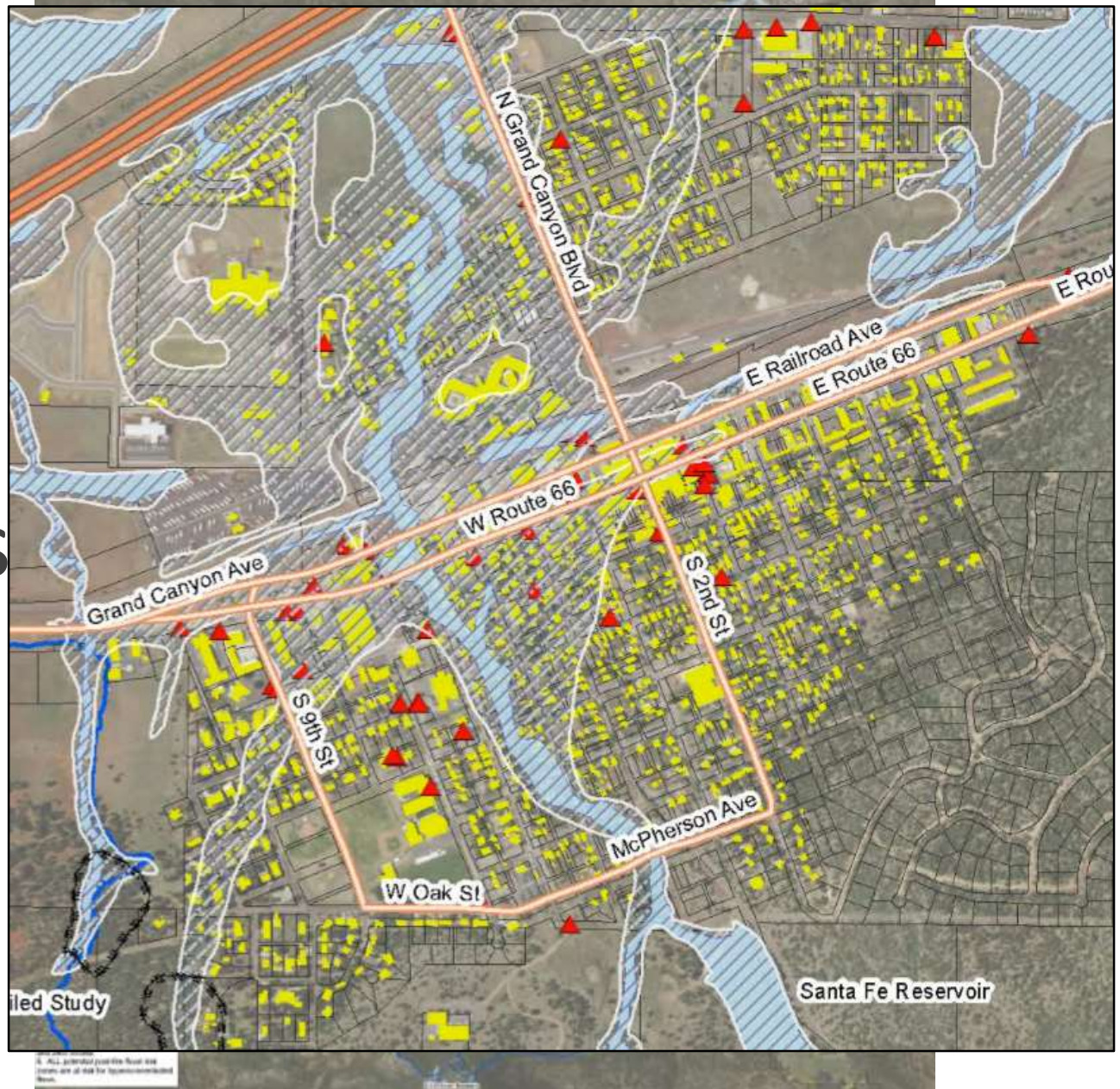


# Williams Flood Results Downtown





# Williams 100-Year Risk Zones





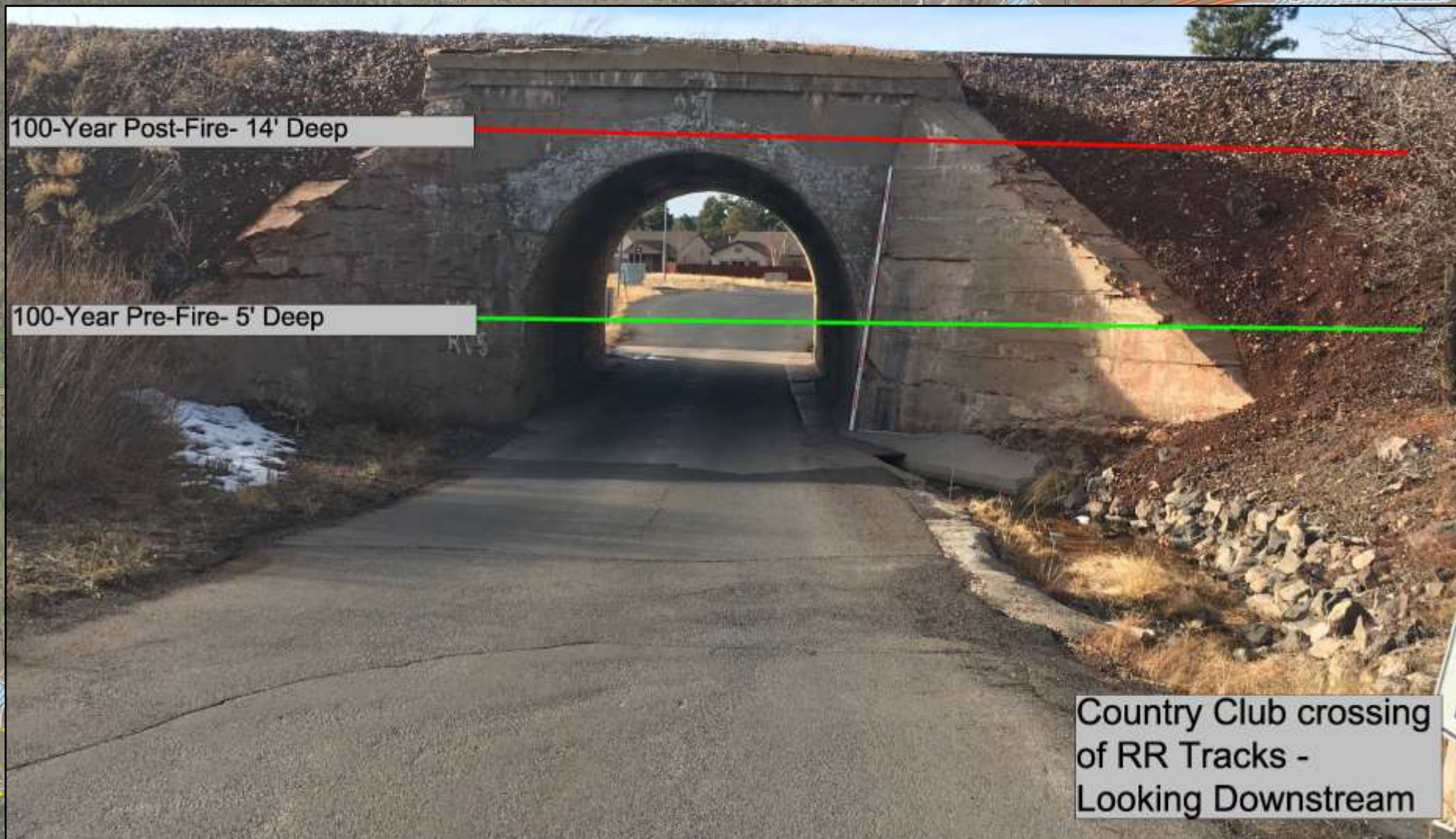


100-Year Post-Fire- 4' Deep over Road

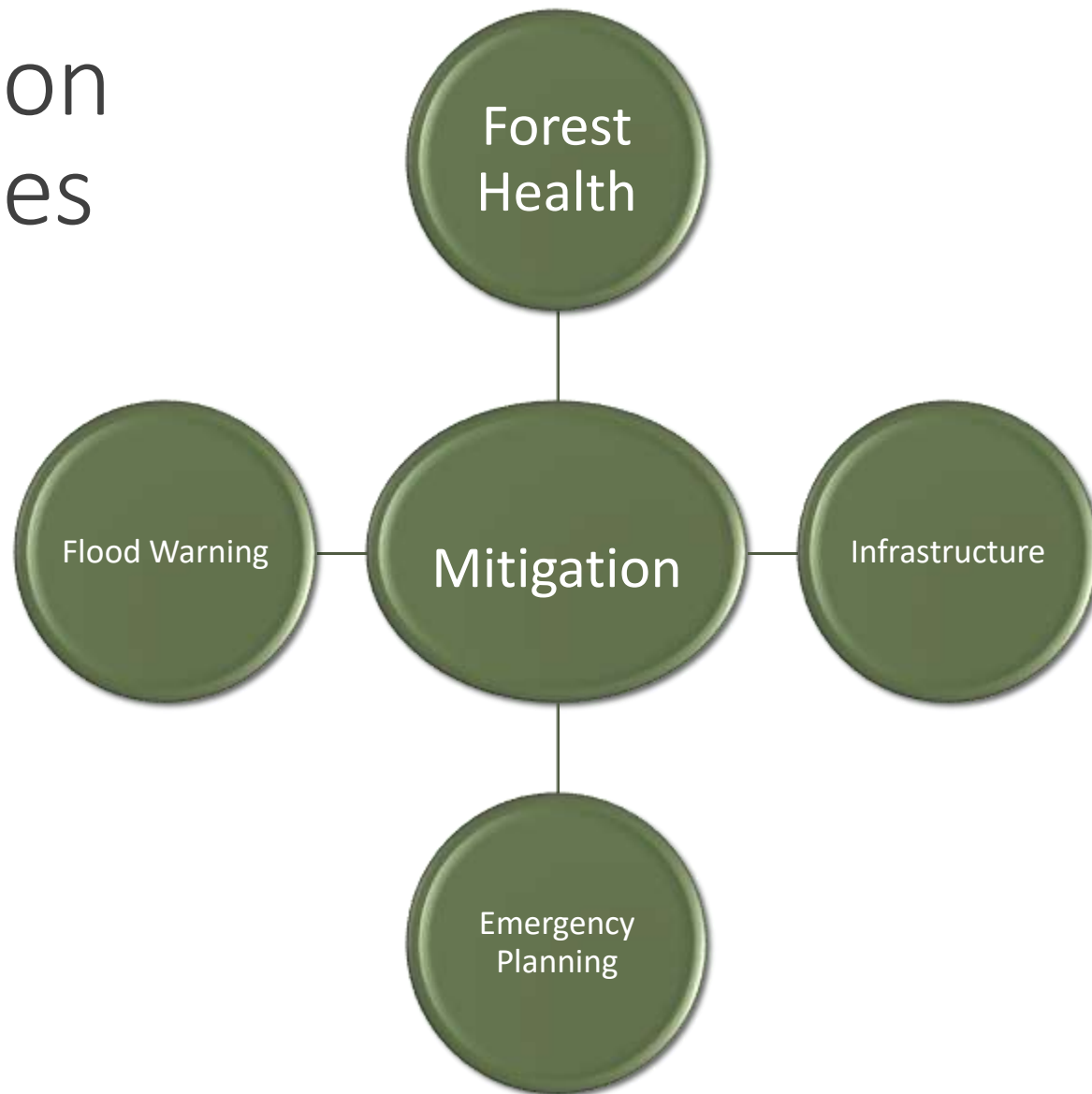
100-Year Pre-Fire- 1' Deep over Road

Cataract Creek  
crossing of 5th Street -  
Looking Upstream





# Mitigation Strategies



## Collaboration is Key!

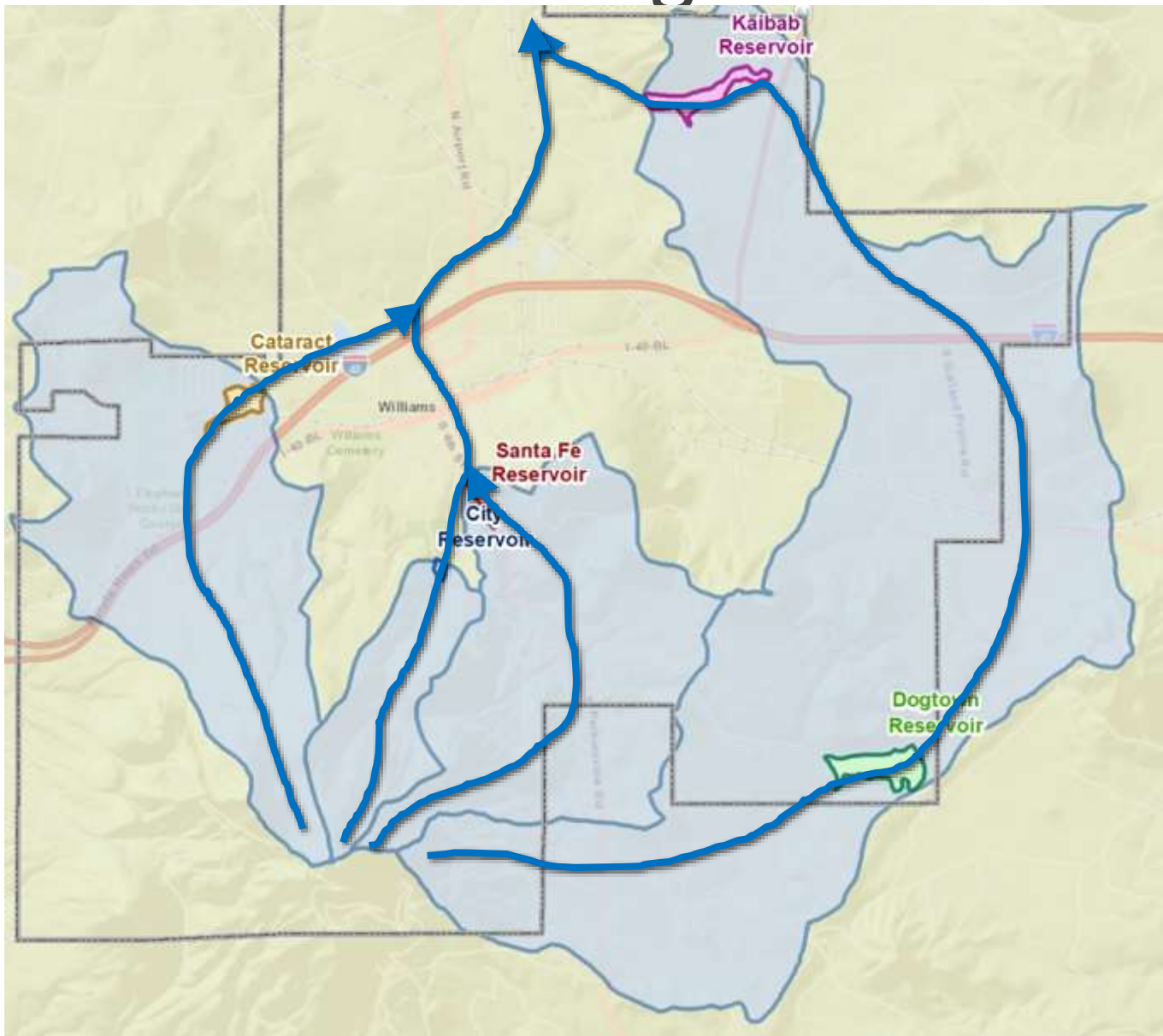


# Emergency Action Plan





# Reservoir Management Plan



# Questions?

---

Joe Loverich, PE, CFM  
JE Fuller/Hydrology &  
Geomorphology, Inc.  
[joe@jefuller.com](mailto:joe@jefuller.com)  
[www.jefuller.com](http://www.jefuller.com)